

Ketchup GAN: A New Dataset for Realistic Synthesis of Letters on Food

Gibran Benitez-Garcia, and Keiji Yanai

The University of Electro-Communications

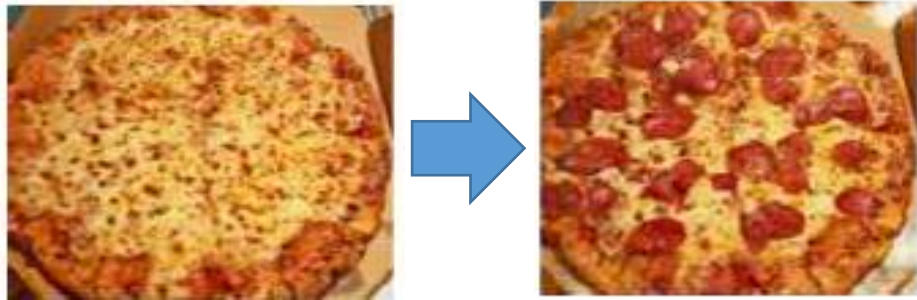
MMArt-ACM '21

2021.11.16

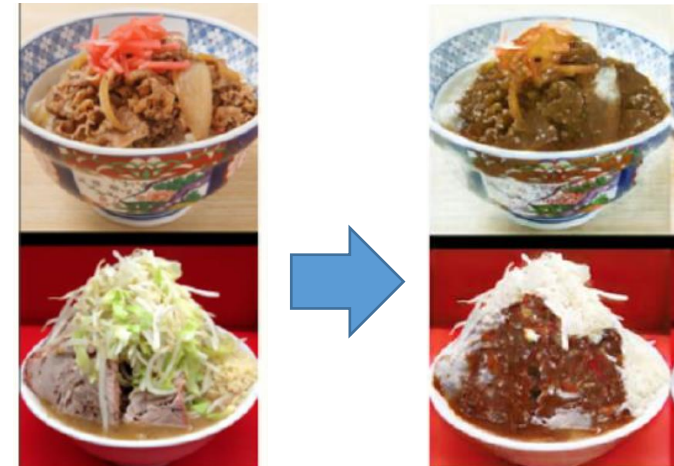


Motivation

- **Food image generation and translation** have been attracted particular attention due to the outstanding performance of GAN networks
- To train GAN models, a **large amount of real-world images** is needed
- There is no GAN-based model proposed for **food image decoration**



PizzaGAN*



FoodGAN**

* "How to make a pizza: Learning a compositional layer-based GAN model," CVPR 2019

** "Unseen Food Creation by Mixing Existing Food Images with Conditional StyleGAN," MADiMa 2019



Objective

- **Objective:**
 - Introduce a new dataset for realistic synthesis of letters on food
- **Approach:**
 - Gathering real-world images of omelettes decorated with ketchup letters and generate egg and ketchup masks, and synthetic ketchup-free images



Original photos



Egg & Ketchup masks



Synthetic ketchup-free



The Ketchup GAN Dataset

– We gathered **omelette rice images** with and without ketchup letters **from Twitter*** in Japan (part of UECFOOD-100 dataset)



Images gathered from Twitter



Geotagged Twitter photo mining from UECFOOD-100



The Ketchup GAN Dataset

- We train a CNN classifier with meaningful omelette dishes, **five classes are obtained with 2000 images per class**
- We train a **weakly supervised segmentation*** algorithm for obtaining ketchup and omelette masks



Early results from weakly supervised semantic segmentation



The Ketchup GAN Dataset

– *Four sets with 1,150 images each conform the complete dataset*



Omelette with ketchup



Segmentation masks



Synthetic ketchup-free

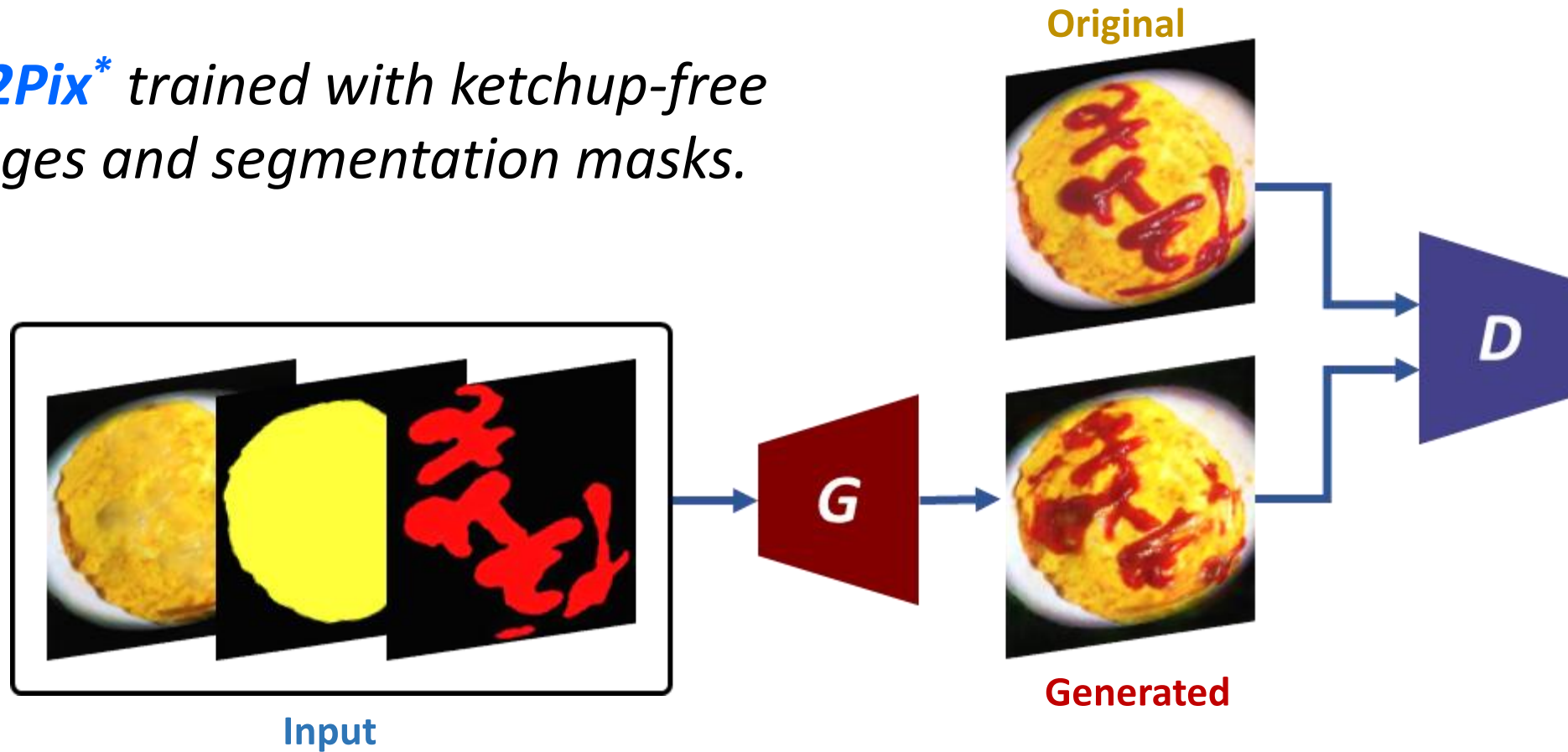


Original plain omelette



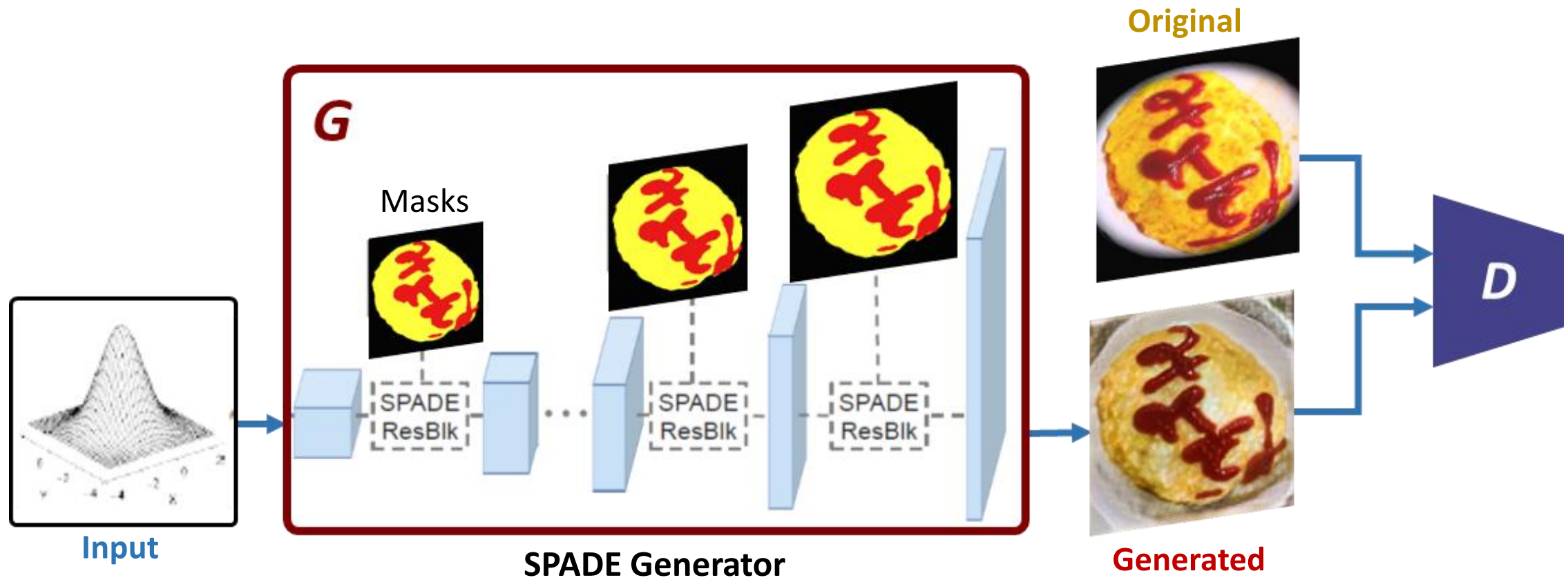
Photorealistic Ketchup Letter Synthesis

- We **test two GAN models** with our dataset
- **Pix2Pix*** trained with ketchup-free images and segmentation masks.



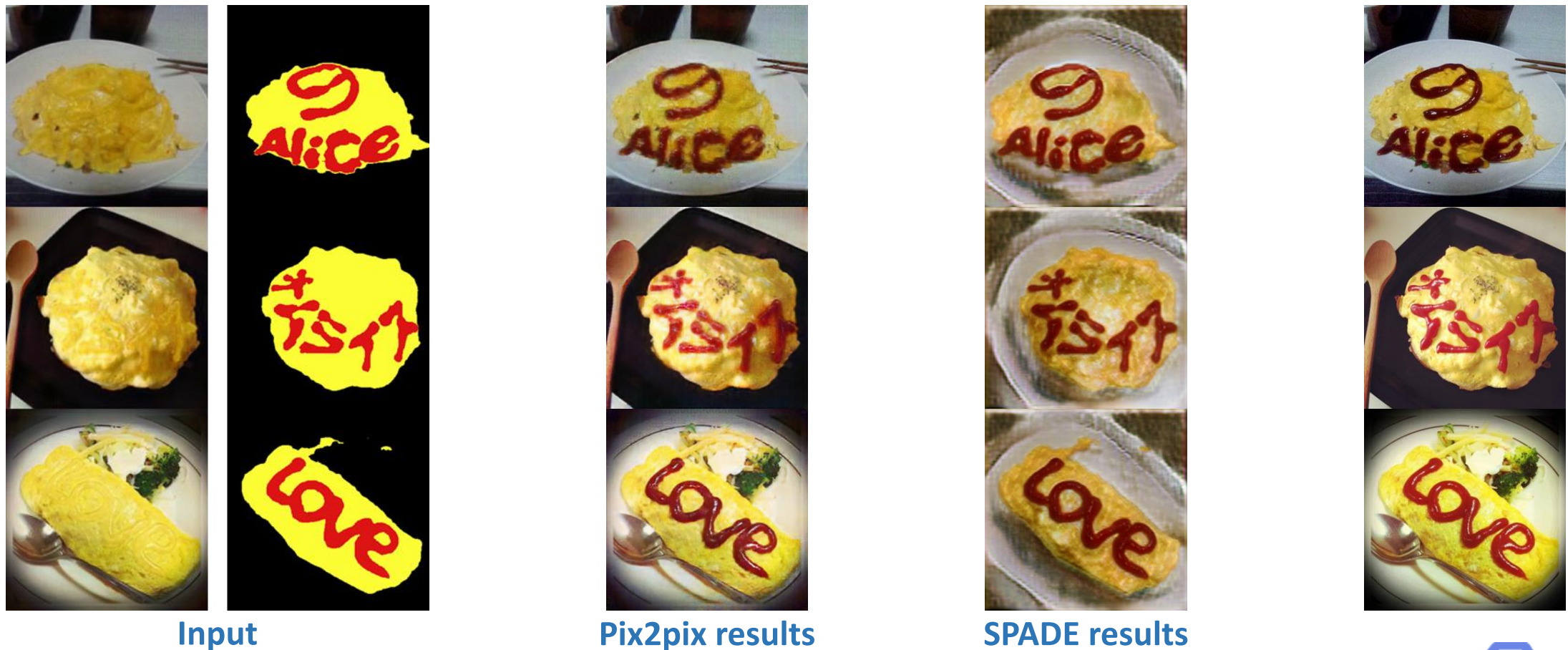
Photorealistic Ketchup Letter Synthesis

– **SPADE*** trained only with segmentation masks.



Photorealistic Ketchup Letter Synthesis

– *Results from test set of our dataset.*



Photorealistic Ketchup Letter Synthesis

– Results with *customized ketchup patterns*.



Pattern



Input



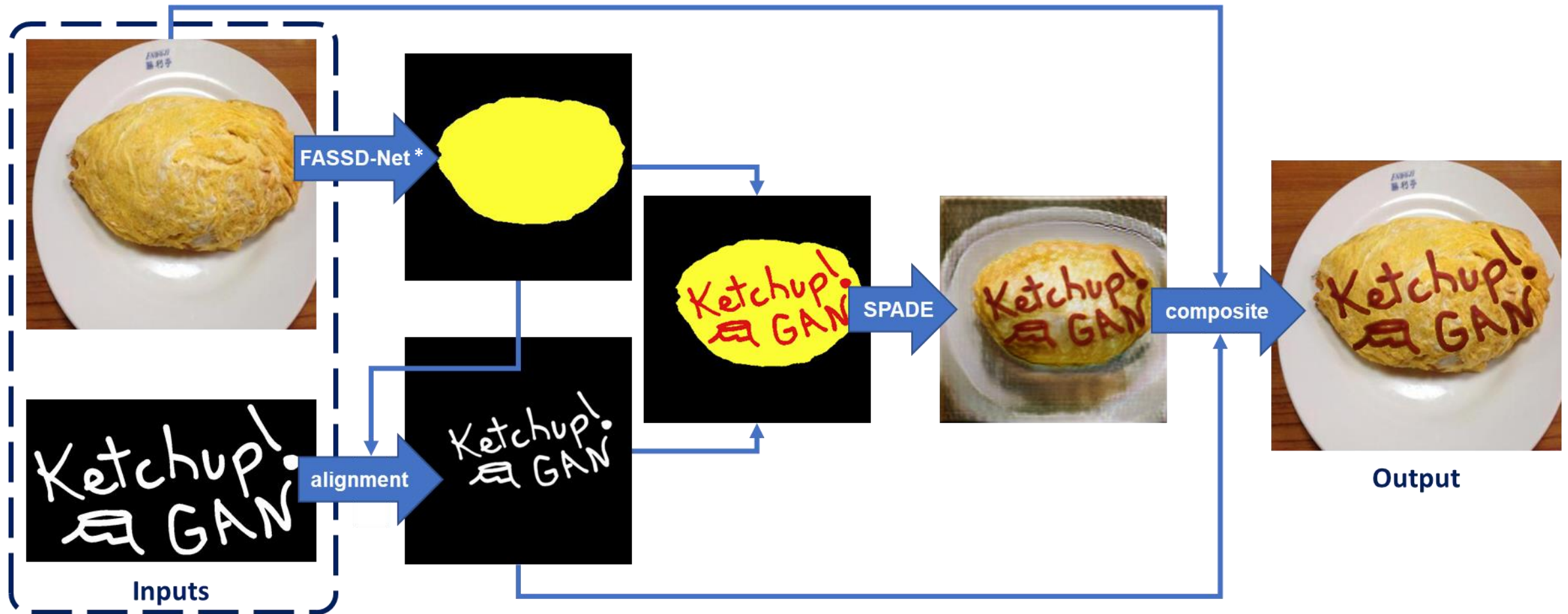
Pix2pix results



SPADE results



Omelette Decoration (Application)

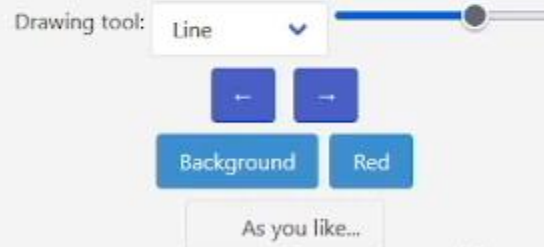


Qualitative results



– Comparison with *manually edited* photo.





There are two ways to choose an image.



- **Conclusions:**

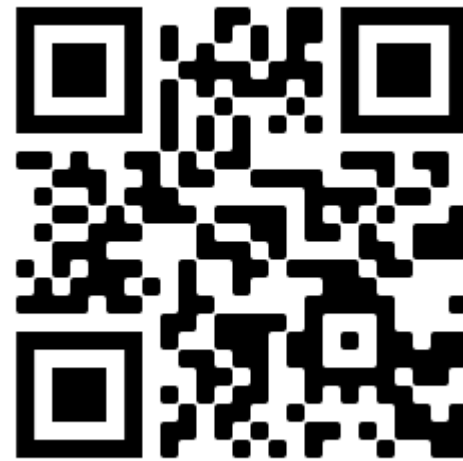
- *We introduced a new dataset for the realistic synthesis of ketchup.*
- *We evaluated two GAN-based methods for ketchup synthesis using our dataset, and proposed a simple omelette decoration application.*
- *Our results show that the proposed dataset is suitable for training GAN-based methods.*

- **Future work:**

- *Improve the application by proposing a GAN model capable of aligning the input texts and synthesizing omelettes with ketchup patterns simultaneously.*



Thank You For Your Attention



<http://mm.cs.uec.ac.jp/omrice/>

